



BMDS

LADS-100

Ergonomic Mobile Workstation

Developed for use in biomedical research environments, the LADS-100 ergonomic mobile workstation facilitates the safe handling and weighing of laboratory animals like dogs and primates. Safety, convenience, and ergonomics were top priorities during development and are immediately evident in the final product.

Polyurethane casters, 5-inches in diameter by 2-inches wide, glide on precision ball bearings for easy rolling. Once positioned, a single foot operated pedal locks all four wheels—for safety during use—securing the cart in place for the weighing process. The 18-inch square weighing platform is wide and safe to step on while holding an animal, and an optional weighing box to hold specimens is also available. Standard features include a 30-foot long AC power cable wound on a recoiling reel and a 6-outlet power strip, located inside the metal storage cabinet. The WB150 weighing platform and Panther scale terminal from Mettler Toledo complete the hardware in this front cover photo, which illustrates an ideal system configuration as purchased by customer.

Superior design, efficient operation, and a space-saving footprint make the LADS-100 ergonomic mobile workstation lab-friendly—even for space-challenged facilities—and the all stainless steel cart construction provides strength and durability for years of reliable service.



Features & Benefits

- Polyurethane casters, 5-inches in diameter by 2-inches wide
- 30 ft. long recoiling AC cord reel and 6-outlet power strip are installed in cabinet (International models are available upon request)
- All stainless steel cart construction
- Optional lightweight durable plastic box for placing animals on scale is available.



www.BMDS.com

LADS-100 Functional Overview



Physical Characteristics

Weight: 400 lbs.
 Length: 35 inches Long
 Height: 41" high keyboard tray from floor
 Width: 24 inches Wide

All stainless steel cart construction

18 inches square weighing platform is wide and safe to step on with an animal

Polyurethane casters on precision ball bearing; 5 inches in diameter x 2 inches wide

One pedal locks (prevents swiveling and rolling) and secures the cart for weighing function

30 foot long recoiling AC cord reel and a 6-outlet power strip are installed in the cabinet (International models are available upon request)

Optional lightweight durable plastic box for placing animals on scale is available

Hardware

DAS-7001c, Symbol Bar Code Scanner, and customer supplied WB150 weighing platform and Panther terminal from Mettler Toledo are featured for illustration purposes only

Warranty

90 Days parts & labor

Design and specifications are subject to change without notice. Please visit us on the web at www.BMDS.com for the latest information, specifications, demonstrations, training and more!



WRS-6007



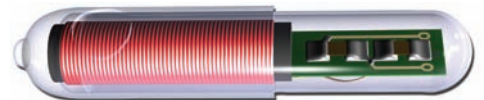
MEO-6000m

Related Products

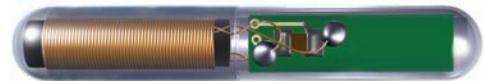


DAS-6008

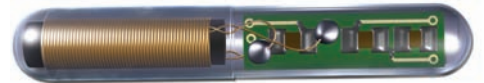
IMI-1000



IPT-300



IPTT-300



Enlarged to show details



SP-6004/5



World Headquarters

Bio Medic Data Systems, Inc.
 1 Silas Road
 Seaford, Delaware 19973 U.S.A.
 Telephone: (302) 628-4100
 Toll Free: (800) 526-2637
 FAX: (302) 628-4110
www.BMDS.com

Visit us online at www.BMDS.com for the latest information, specifications, demonstrations, training and more!



© Copyright Bio Medic Corporation 2008, BMDS, Implantable Programmable Temperature Transponder, and the BMDS logo are trademarks of Bio Medic Data Systems, Inc. Covered by various U.S. and International patents and patents pending. U.S. Patent Nos. 5,481,262; 5,422,636; 5,074,318; 5,024,727; 5,252,962; 5,274,030; 5,420,579; 5,250,944; 5,262,772; DES. 351,151; DES. 330,891; 5,650,778; 5,002,548; 4,787,384; DES. 358,644. Design and specifications are subject to change without notice.