



BMDS

IMI-1000

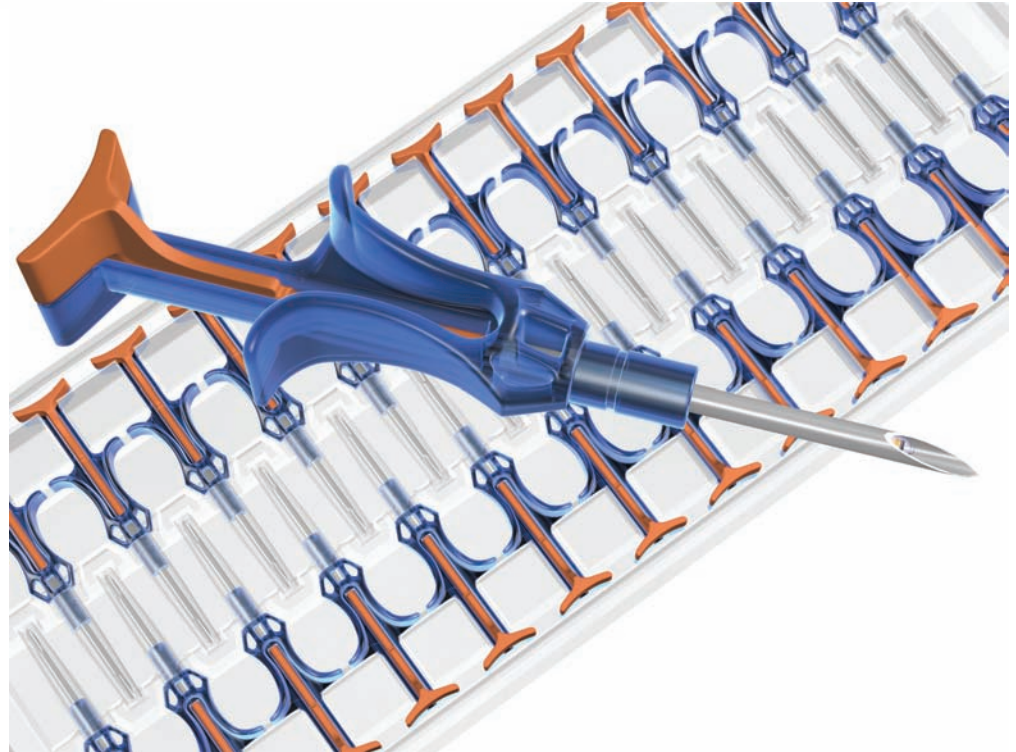
IMI-1000 Implantable Micro Identification™

The IMI-1000 is a miniature glass-encapsulated 'read only' transponder. Scanned by an appropriate reader device, the IMI-1000 transmits its 10-digit alphanumeric code, making positive, fail-safe animal identification quick and easy ... Even now, years after its introduction, the IMI remains the transponder of choice for many researchers.

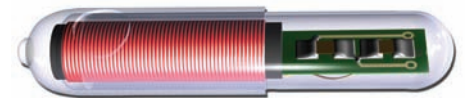
Designed for harmless implantation, BMDS transponders are the most convenient, humane, reliable, and cost effective method for automated animal identification. Approximately 11 millimeters in length by 2 millimeters in diameter, the IMI-1000 transponder features a patented anti-migration device, which anchors it securely to tissue at the implant site. You can even retrieve data decades after a study ends if you remove the transponder with a tissue sample and place it into long-term storage, in cold or liquid preservative.

Injected with a syringe-like action, IMI-1000 transponders are pre-loaded in a disposable needle assembly. The ergonomic design of this one-piece tool fully integrates the handle, stainless steel needle, and drive pin. Packaged in boxes of 100, needle assemblies (one transponder each) are processed through an ethylene oxide cycle for sterilization. No assembly is required. Pick it up, remove the needle cap, implant the transponder, and dispose—all in one clean operation.

Our DASHost™ software facilitates importing data into widely used applications such as Microsoft Excel™, offers a menu driven solution to collecting data from various sources (scales, calipers, etc.) and provides an ingenious method to receive, map, control and route data. Users may continue with the randomly programmed 10-digit factory code, or—via DASHost™—may choose to expand or delete the number of characters needed to fit your database. In addition, you can create a 'cross reference file' displaying alphanumeric characters to fit any coding scheme you desire.



Shown at actual size



Shown at 5 times actual size

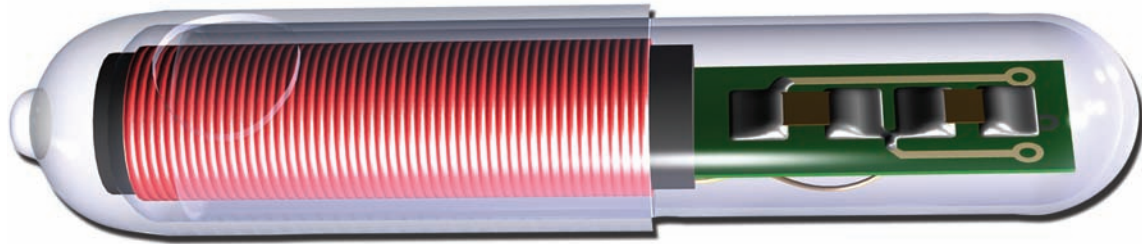
Features & Benefits

- Fail-safe animal identification
- Size: 11 millimeters long x 2 millimeters in diameter
- Biocompatible; suitable for all laboratory animal species
- Internationally patented anti-migration device
- Each transponder is pre-loaded in a disposable, sterile, needle assembly
- Memory: 10 alphanumeric characters (non-volatile data)
- Reading: Proximity, non-contact
- Use with any IMI compatible Smart Probe and 6000 series reader

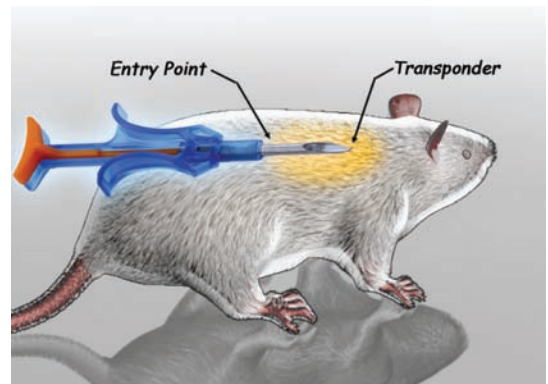
www.BMDS.com



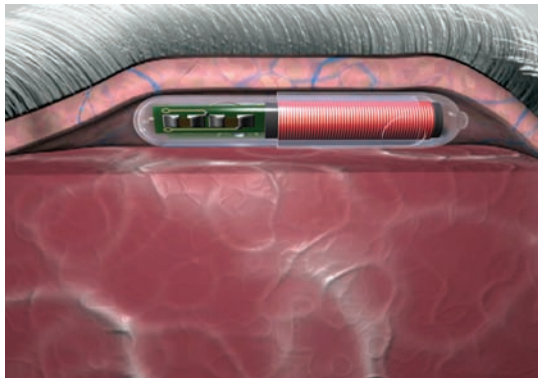
IMI-1000 Functional Overview



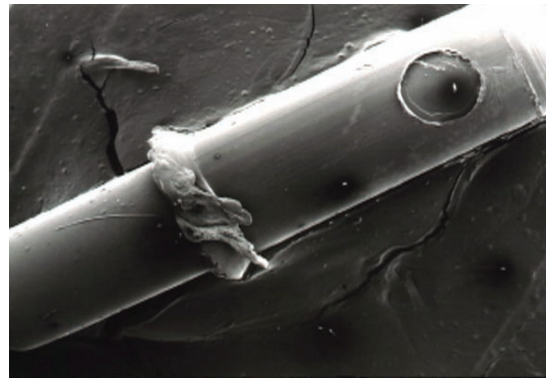
Pre-sterilized, disposable, needle assemblies



Simple to implant



Anchors securely to tissue
(Patented anti-migration)



Non-adverse physiological reaction and safe
long-term storage



World Headquarters
Bio Medic Data Systems, Inc.
1 Silas Road
Seaford, Delaware 19973 U.S.A.
Telephone: (302) 628-4100
Toll Free: (800) 526-2637
FAX: (302) 628-4110
www.BMDS.com

Visit us online at www.BMDS.com for the latest information, specifications, demonstrations, training and more!



© Copyright Bio Medic Corporation 2008, BMDS, Implantable Programmable Temperature Transponder, and the BMDS logo are trademarks of Bio Medic Data Systems, Inc. Covered by various U.S. and International patents and patents pending. U.S. Patent Nos. 5,481,262; 5,422,636; 5,074,318; 5,024,727; 5,252,962; 5,274,030; 5,420,579; 5,250,944; 5,262,772; DES. 351,151; DES. 330,891; 5,650,778; 5,002,548; 4,787,384; DES. 358,644. Design and specifications are subject to change without notice.